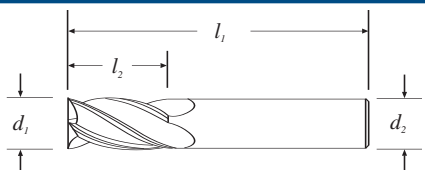


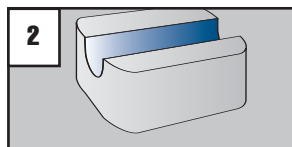
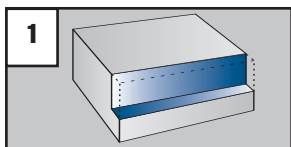
## 16



Cutting Diameter $d_1$	Length of Cut $l_2$	Overall Length $l_1$	Shank Diameter $d_2$	Uncoated	Ti-NAMITE (TiN)	Ti-NAMITE-C (TiCN)	Ti-NAMITE-A (AlTiN)
				EDP No.	EDP No.	EDP No.	EDP No.
1/16	1/8	1-1/2	1/8	31601	31650	31238	31251
3/32	3/16	1-1/2	1/8	31603	31651	31239	31252
1/8	1/4	1-1/2	1/8	31605	31652	31240	31253
5/32	5/16	2	3/16	31607	31653	31241	31254
3/16	3/8	2	3/16	31609	31654	31242	31255
7/32	7/16	2	1/4	31611	31655	31243	31256
1/4	1/2	2	1/4	31613	31656	31244	31257
5/16	1/2	2	5/16	31615	31657	31245	31258
3/8	5/8	2	3/8	31617	31658	31246	31259
7/16	5/8	2-1/2	7/16	31619	31659	31247	31260
1/2	5/8	2-1/2	1/2	31621	31660	31248	31261
5/8	3/4	3	5/8	31623	31661	31249	31262
3/4	1	3	3/4	31625	31662	31250	31263

### TOLERANCES

$d_1 = +.000 - .002$   
 $d_2 = -.0001 - .0004$



### E

#### Series 16 End Mills - Square End Micrograin Solid Carbide

4 Flute - Short Length - 30° Right Hand Spiral  
- Right Hand Cutting - Center Cutting

### ES

#### Fresas Serie 16 - Punta plana Carburo sólido con micrograno

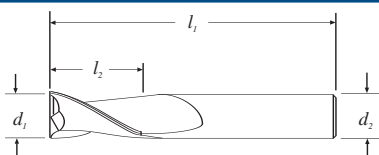
4 filos - Serie corta - Hélice a derecha 30°  
- Corte a derecha - Corte al centro

### FR

#### Fraises Série 16 - Bout plat Carbure monobloc, micrograin

4 dents - Courtes - Hélice à droite, 30°  
- Coupe à droite - Coupe au centre

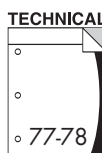
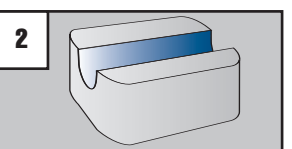
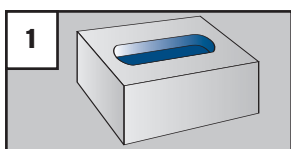
## 17



Cutting Diameter $d_1$	Length of Cut $l_2$	Overall Length $l_1$	Shank Diameter $d_2$	Uncoated	Ti-NAMITE (TiN)	Ti-NAMITE-C (TiCN)	Ti-NAMITE-A (AlTiN)
				EDP No.	EDP No.	EDP No.	EDP No.
1/16	1/8	1-1/2	1/8	31701	31750	31303	31358
3/32	3/16	1-1/2	1/8	31703	31751	31304	31359
1/8	1/4	1-1/2	1/8	31705	31752	31305	31360
5/32	5/16	2	3/16	31707	31753	31306	31361
3/16	3/8	2	3/16	31709	31754	31307	31362
7/32	7/16	2	1/4	31711	31755	31308	31363
1/4	1/2	2	1/4	31713	31756	31309	31364
5/16	1/2	2	5/16	31715	31757	31310	31365
3/8	5/8	2	3/8	31717	31758	31311	31366
7/16	5/8	2-1/2	7/16	31719	31759	31312	31367
1/2	5/8	2-1/2	1/2	31721	31760	31313	31368
5/8	3/4	3	5/8	31723	31761	31314	31369
3/4	1	3	3/4	31725	31762	31315	31370

### TOLERANCES

$d_1 = +.000 - .002$   
 $d_2 = -.0001 - .0004$



### E

#### Series 17 End Mills - Square End Micrograin Solid Carbide

2 Flute - Short Length - 30° Right Hand Spiral  
- Right Hand Cutting - Center Cutting

### ES

#### Fresas Serie 17 - Punta plana Carburo sólido con micrograno

2 filos - Serie corta - Hélice a derecha 30°  
- Corte a derecha - Corte al centro

### FR

#### Fraises Série 17 - Bout plat Carbure monobloc, micrograin

2 dents - Courtes - Hélice à droite, 30°  
- Coupe à droite - Coupe au centre